

The Sapindigo BW Object Statistic tools will display the following system information about your Sap BW / Netweaver data warehouse:

CUBES

- Aggregate Cube
- Basic Cube
- Remote Cube
- MultiProvider
- Virtual Cube

ODS

- ODS Objects

INFOSETS

- InfoSet Objects

INFOOBJECTS

- Characteristic
- Key figure
- Time characteristic
- Data packet
- Unit of measurement

INFOPACKAGES

- InfoPackages

INFOSOURCES

- Transaction
- Transaction Transfer
- Master Data
- Master Data Transfer
- Hierarchy Transfer

SOURCE SYSTEMS

- SAP Systems
- PC File Systems
- Third Party Systems

INFOOBJECT CATALOGS

- Characteristic
- Key Figure

QUERIES

- Reporting Queries

WORKBOOKS

- Reporting Workbooks

BW USERS

- BW Users

APPLICATION SERVERS

- Application Servers

To use open this workbook you must Enable Macro to run, if you do not trust the source the please contact Sapindigo to verify, contact details are:

info@Sapindigo.com

ID: 0062 213928667

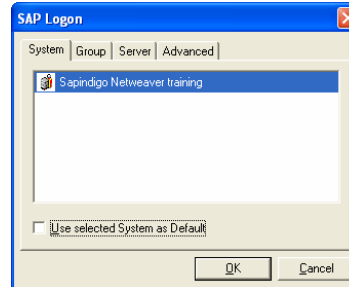
UK: 0044 20 7193 8426

Once Macros are enabled press the

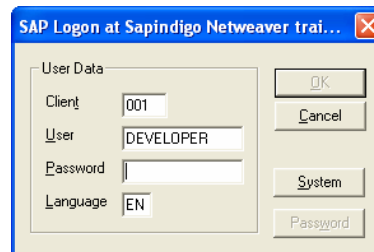
Get Statistics

button, you will then be prompted

to select your BW / Netweaver system:



Select your system and then enter your logon in details:



Your password is not stored; it is only for logon purposes to the BW / Netweaver system. Please note that in order to run this tool you **MUST** have sufficient authorisations granted in your BW / Netweaver system.

Your statistics are then collected from the system and returned to the worksheet for viewing. On completion the following pop-up window will be displayed:



If you would like a custom built tool or application for your BW / Netweaver or even R/3 system then Sapindigo can assist you in design and development.

We hope you found this tool useful and would like to hear your feedback.