

The Sapindigo BW InfoCube definition tool will display the following system information about your SAP BW / Netweaver InfoCube definitions:

- Dimensions
- InfoObjects (including navigational)
- InfoObjects by Dimension

Every good BW consultant knows that the order in which the InfoObjects are placed within a dimension impacts query performance. The most commonly used InfoObjects should always be placed towards the beginning of the Dimension due to the way BW determines the dimension ID keys i.e. Left to right DB reads.

Moreover this tool will help you identify logical groupings of InfoObjects (Taxonomy) that should be placed together not only for logical reasons but again for performance.

The full version of this tool allows several extra features:

- Display, Create and Change InfoCubes directly from an excel workbook
- Download all system InfoCubes simultaneously
- Display a complete listing of all system Cubes with their technical settings

This tool is extremely useful for:

- System documentation
- Performance tuning
- Offline backup of system developments (allowing to capture changes over time)
- Reduced BW data model build and re-build time
- Creating re-usable custom 'business content'

Indeed this tool will save many consulting hours and reduce your overall BW project development costs. Please contact for more information: [www.Sapindigo.com](http://www.Sapindigo.com)

To use open this workbook you must Enable Macro to run, if you do not trust the source the please contact Sapindigo to verify, contact details are:

[info@Sapindigo.com](mailto:info@Sapindigo.com)

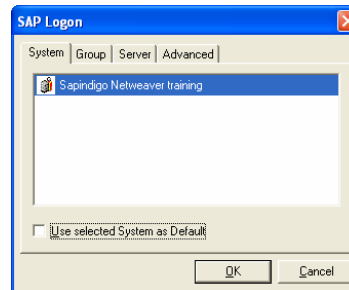
ID: 0062 213928667

UK: 0044 20 7193 8426

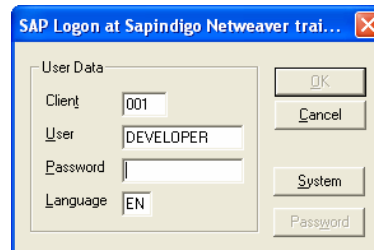
Enter the technical name of the InfoCube i.e. 0FIGL\_C01 (This is not necessary in the full version):

OBJVERS	INFOCUBE ▼	Get Cube Details
A	0FIGL_C01	

Once Macros are enabled press the  button, you will then be prompted to select your BW / Netweaver system:



Select your system and then enter your logon in details:



Your password is not stored; it is only for logon purposes to the BW / Netweaver system. Please note that in order to run this tool you **MUST** have sufficient authorisations granted in your BW / Netweaver system.

The InfoCube definition is then returned to the worksheet for viewing.

DIMENSIONS			INFOOBJECTS			DIMENSION INFO-OBJECTS		
Dimension	Description	Object Type	Position	Info Object	Object Type	Dimension	Position	InfoObject
0FIGL_C01P	Data Package	DPA	1	0CHNGID	DPA	0FIGL_C01P	1	0CHNGID
0FIGL_C01T	Time	TIM	2	0RECORDTP	DPA	0FIGL_C01P	2	0RECORDTP
0FIGL_C01U	Unit	UNI	3	0REQUID	DPA	0FIGL_C01P	3	0REQUID
0FIGL_C011	Organizational Units	CHA	4	0FISCVARNT	TIM	0FIGL_C01T	1	0FISCVARNT
0FIGL_C012	Accounts	CHA	5	0FISCYEAR	TIM	0FIGL_C01T	2	0FISCYEAR
0FIGL_C013	Types and Versions	CHA	6	0FISCPER	TIM	0FIGL_C01T	3	0FISCPER
			7	0FISCPER3	TIM	0FIGL_C01T	4	0FISCPER3
			8	0CURRENCY	UNI	0FIGL_C01U	1	0CURRENCY
			9	0COMP_CODE	CHA	0FIGL_C011	1	0COMP_CODE
			10	0COMP_CODE_0COMPANY	CHA	0FIGL_C011	2	0COMP_CODE_0COMPANY
			11	0BUS_AREA	CHA	0FIGL_C011	3	0BUS_AREA
			12	0CHRT_ACCTS	CHA	0FIGL_C012	1	0CHRT_ACCTS
			13	0GL_ACCOUNT	CHA	0FIGL_C012	2	0GL_ACCOUNT
			14	0GL_ACCOUNT_0BAL_FLAG	CHA	0FIGL_C012	3	0GL_ACCOUNT_0BAL_FLAG
			15	0GL_ACCOUNT_0INCST_FLAG	CHA	0FIGL_C012	4	0GL_ACCOUNT_0INCST_FLAG
			16	0GL_ACCOUNT_0SEM_POSIT	CHA	0FIGL_C012	5	0GL_ACCOUNT_0SEM_POSIT
			17	0VERSION	CHA	0FIGL_C013	1	0VERSION
			18	0VTYPE	CHA	0FIGL_C013	2	0VTYPE
			19	0CURTYPE	CHA	0FIGL_C013	3	0CURTYPE
			20	0DEBIT	KYF			
			21	0CREDIT	KYF			
			22	0BALANCE	KYF			

Analyse your InfoCube definition for performance gains and taxonomy errors, avoid using too many navigational attributes as this reduces query performance significantly.

-----

If you would like a custom built tool or application for your BW / Netweaver or even R/3 system then Sapindigo can assist you in design and development.

We hope you found this tool useful and would like to hear your feedback.